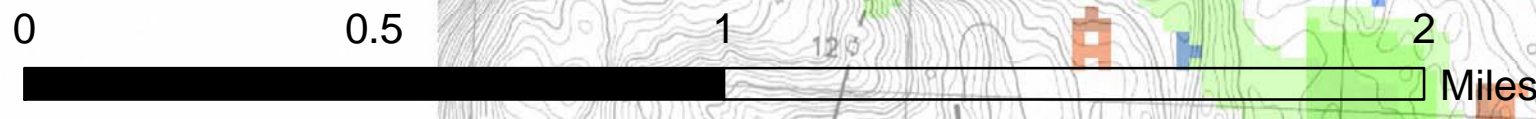
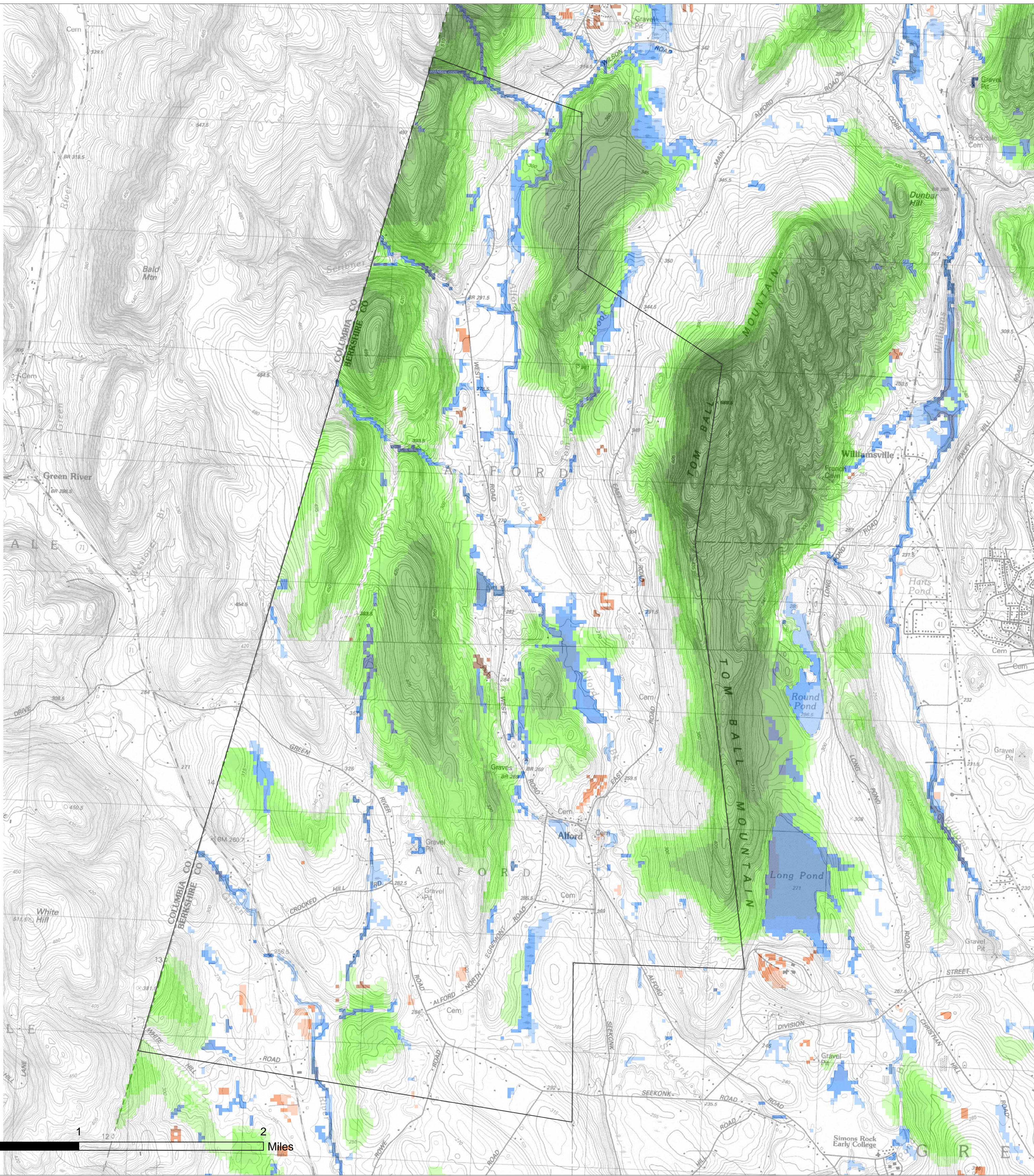
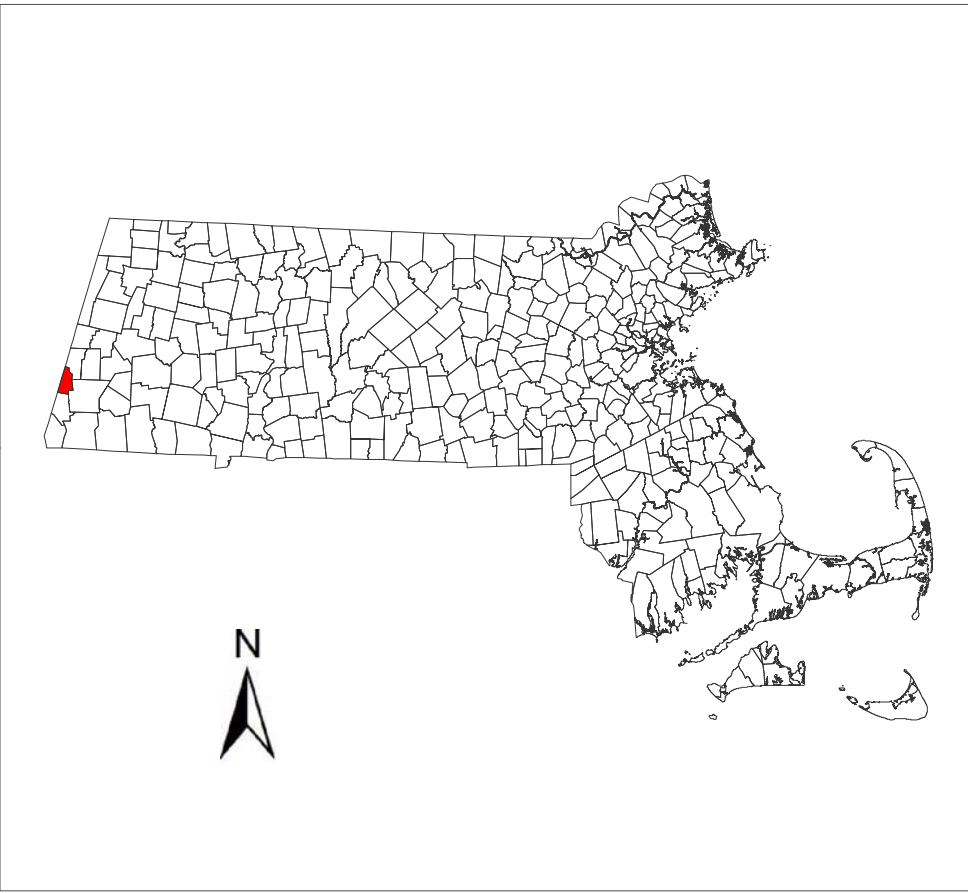


CAPS Index of Ecological Integrity (IEI) Town of ALFORD, MA



Updated November 2011



IEI, Index of Ecological Integrity Top 50% of the Landscape



50-60 60-70 70-80 80-90 90-100% IEI



**UMass
Extension**
CENTER FOR AGRICULTURE

The IEI, or Index of Ecological Integrity, delineates the relative wildlife habitat and biodiversity value of any point on the landscape based on landscape ecology principles and expert opinion. The IEI is calculated by the Conservation Assessment and Prioritization System (CAPS) computer program developed at the University of Massachusetts, Amherst. Depicted on this map are those areas representing 50% of the landscape with the highest IEI values; the darker the color the higher the integrity value. For more information see: <http://www.masscaps.org>.

Coastal beaches and rocky intertidal shores are included as Coastal Wetland and Aquatic.

These maps were funded by grants from The Nature Conservancy and the Federal Highway Administration via a grant administered by the Massachusetts Department of Transportation, the Massachusetts Department of Environmental Protection and the U.S. Environmental Protection Agency under section 104 (b) (3) of the U.S. Clean Water Act. Data sources include the Office of Geographic and Environmental Information (MassGIS).

Prepared in cooperation with the Massachusetts Department of Transportation Office of Transportation Planning, and the United States Department of Transportation, Federal Highway Administration. The contents of this report reflect the views of the author(s), who is (are) responsible for the facts and the accuracy of the data presented herein. The contents do not necessarily reflect the official view or policies of the Massachusetts Department of Transportation or the Federal Highway Administration. This report does not constitute a standard, specification, or regulation.